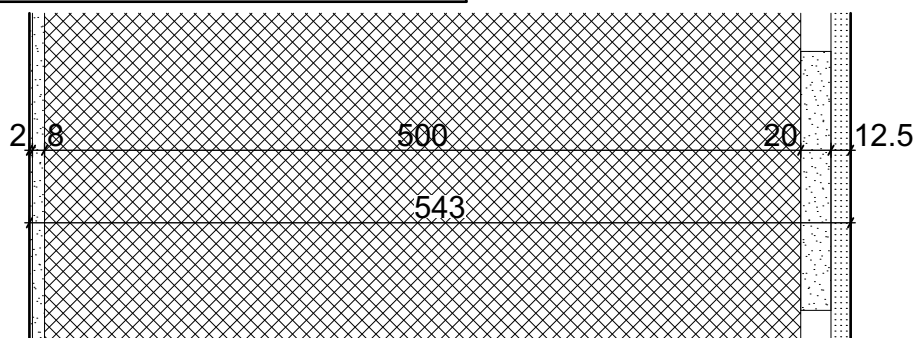


EXTERNAL WALL WA1

SC 1:5



COMPOSITION OF EXTERNAL WALL HELUZ 50 2in1

N	FUNCTION	MATERIAL SPECIFICATION	STABILIZATION	THICKNESS
1	SURFACE FINISH	THIN-FILM PASTE PLASTER silicate, water vapour permeability $s_d < 0.14 \text{ m}$, water absorption $w > 0.1$ and $< 0.5 \text{ kg/m}^2 \cdot \text{h}^{0.5}$, cohesion 0.32 MPa, grain 1.5, 2.0, 3.0 mm, coefficient of thermal conductivity $\lambda_{10, \text{dry}} \text{ max } 0.74 \text{ W/m} \cdot \text{K}$, fire reaction class A2-s1,d0	stainless steel trowel	2
2	PENETRATION	HIGH SHEAR PENETRATION UNDER SILICATE MATERIALS pH circa 11, solubility in water unlimited, drying time circa 12 hours	roller, brush or spraying machine	-
3	CEMENT SPRAYING	CEMENT MORTAR FOR BASE LAYER TREATMENT + GLASS FIBRE MESH compressive strength 6.0 MPa, adhesion min. 0.3 MPa, factor of diffusion resistance of water vapour max 35, coefficient of thermal conductivity $\lambda \text{ max } 0.82 \text{ W/m} \cdot \text{K}$, fire reaction class A1, grain 0-2 mm	stainless steel trowel or spraying machine	8
4	LOAD-BEARING/ INSULATION	LOAD-BEARING MASONRY BRICK WITH IMPLEMENTED INSULATION monolayer perimeter brick of zero, passive, low energy and energy-efficient buildings, heat transfer coefficient $U 0.11 \text{ W/m}^2 \cdot \text{K}$, thermal resistance $R 9.16 \text{ m}^2 \cdot \text{K/W}$, coefficient of thermal conductivity $\lambda_u 0.058 \text{ W/m} \cdot \text{K}$, fire reaction class B-s1,d0, fire resistance REI 30 DP1/90 DP3, airborne noise $R_w 44(-1,-2)$, diffusion resistance factor $\mu 9.71$	-	500
5	PENETRATION	CONCENTRATED WATER DISPERSION concentrated aqueous dispersions of artificial resins based on acrylic resins with additives, consumption 100 g/m^2 , dilution ratio 1:4, drying time circa 24 hours	roller, brush or spraying machine	-
6	ADHESIVE BINDER	GYPSUM ADHESIVE BINDER adhesion min. 0.24 MPa, fire reaction class A1, drying time min. 12 hours	stainless steel trowel	20
7	GYPSUM BOARD	GYPSUM BOARD coefficient of thermal conductivity $\lambda_u 0.21 \text{ W/m} \cdot \text{K}$, fire reaction class A2-s1,d0, diffusion resistance factor $\mu 6-10$, longitudinal expansion factor in case of humidity change $5-8 \cdot 10^{-6}$, compressive strength 5.0 - 10.0 MPa	mechanically anchored	12.5
8	FILLER	UNIVERSAL PASTE FILLER bending strength $> 320 \text{ N}$, fire reaction class A2-s1,d0	stainless steel trowel	-
9	PAINT	ONE-COMPONENT, WATER-SOLUBLE PAINT DESIGNED FOR GYPSUM BOARDS internal dispersion paint with organic binders and limestone fillers, water vapour permeability 0.02 m	brush or spraying machine	-